



INFRASTEEL
Permanent Culvert Rehabilitation Systems

INFRASTEEL **SMOOTH WALL** **CARBON STEEL** **CULVERT LINER**

**THE SIZES SHOWN ARE INTENDED
TO BE USED AS A GUIDELINE.
SPECIFIC SHAPES AND SIZES
ARE MANUFACTURED PER OUR
CUSTOMERS REQUIREMENTS.**

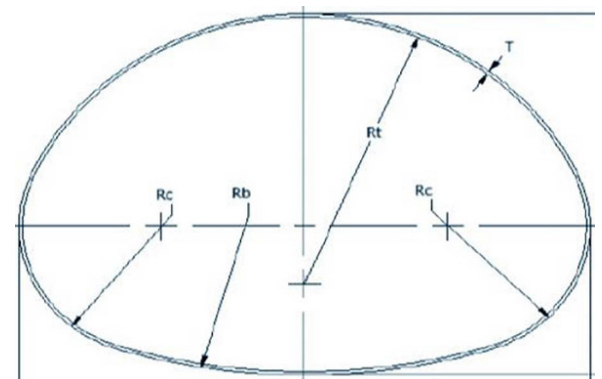
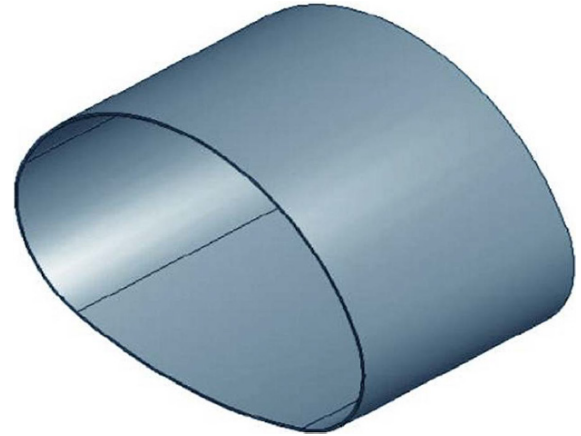
PRECISION
PIPE & PRODUCTS, INC.
A cut above the rest.

www.infrasteel.com | www.precisionpipe.com

InfraSteel Arch Pipe Liner

Span 72" - 138"

Part #	Span (in)	Rise (in)	Flow Area (sq ft)	Wt/Ft (lbs)	Ft/Trk (ft)
A072052	72	52	19.78	333	333
A074053	74	53	20.73	341	341
A076054	76	54	21.71	350	350
A078056	78	56	23.13	360	360
A080057	80	57	24.16	369	369
A082058	82	58	25.21	377	377
A084059	84	59	26.27	386	386
A086061	86	61	27.86	397	397
A088062	88	62	28.98	405	405
A090063	90	63	30.13	413	413
A092064	92	64	31.29	422	422
A094066	94	66	33.03	433	433
A096067	96	67	34.25	441	441
A098068	98	68	35.49	450	450
A100069	100	69	36.75	458	458
A102070	102	70	38.03	466	466
A103071	103	71	38.99	472	472
A104072	104	72	39.96	477	477
A106073	106	73	41.29	486	486
A108057	108	57	32.80	454	454
A108074	108	74	42.65	494	494
A110075	110	75	44.03	503	503
A112076	112	76	45.42	511	511
A114077	114	77	46.84	519	519
A116079	116	79	48.99	530	530
A118080	118	80	50.46	539	539
A120081	120	81	51.95	547	547
A122082	122	82	53.47	556	556
A124083	124	83	55.00	564	564
A126084	126	84	56.55	572	572
A128085	128	85	58.13	581	581
A130086	130	86	59.73	589	589
A131081	131	81	56.21	578	578
A132087	132	87	61.34	597	597
A134089	134	89	63.81	609	609
A136090	136	90	65.48	617	617
A138091	138	91	67.1	625	625



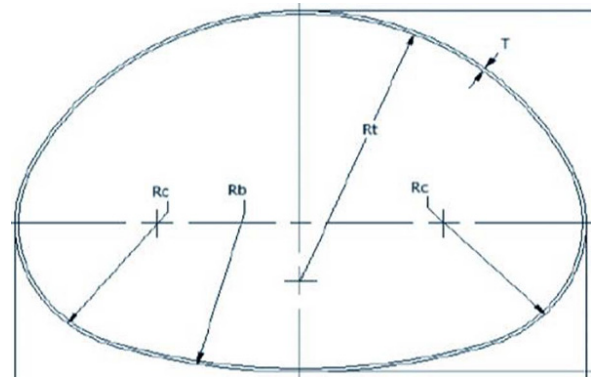
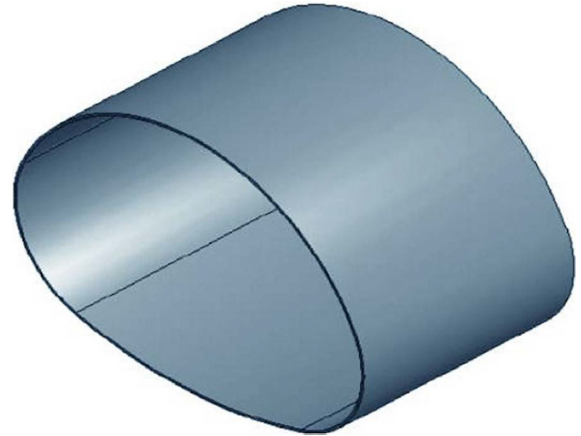
- ➔ **MATERIAL TYPE:** InfraSteel 242 or A36, smooth wall carbon steel.
- ➔ **MANNING'S COEFFICIENT:** 0.012
- ➔ **STANDARD:** Wall Thickness .500". Lengths 8 to 10 ft.
- ➔ **SPECIALS:** Wall Thickness up to 2.00".
- ➔ **INFRASTEEL LINER SIZE AND SHAPE:** Engineered to maximize area of flow based on field measurements

i Specific rise and span dimensions are manufactured based on project requirements.

InfraSteel Arch Pipe Liner

Span 140" – 204"

Part #	Span (in)	Rise (in)	Flow Area (sq ft)	Wt/Ft (lbs)	Ft/Trk (ft)
A140092	140	92	68.88	634	38
A142093	142	93	70.62	642	38
A144089	144	89	67.99	636	38
A144094	144	94	72.37	650	38
A146095	146	95	74.15	659	38
A148096	148	96	75.94	667	38
A150097	150	97	77.76	675	38
A152098	152	98	79.59	684	28
A154099	154	99	81.45	692	28
A156100	156	100	83.33	701	28
A158101	158	101	85.23	709	28
A160102	160	102	87.15	717	28
A162090	162	90	76.64	691	28
A162099	162	99	85.12	714	28
A162103	162	103	89.09	726	28
A164104	164	104	91.05	734	28
A166105	166	105	93.03	742	28
A168106	168	106	95.03	751	28
A170107	170	107	97.06	759	28
A172108	172	108	99.10	767	28
A174109	174	109	101.17	776	28
A176110	176	110	103.25	784	28
A178111	178	111	105.36	793	28
A180111	180	111	106.37	798	28
A182112	182	112	108.51	806	28
A184113	184	113	110.66	815	28
A186114	186	114	112.84	823	28
A188115	188	115	115.04	831	28
A190116	190	116	117.26	840	28
A192117	192	117	119.50	848	28
A194118	194	118	121.76	857	28
A196119	196	119	124.04	865	28
A198119	198	119	125.12	870	28
A200120	200	120	127.43	879	28
A202121	202	121	129.76	887	20
A204122	204	122	132.11	895	20



- ➔ **MATERIAL TYPE:** InfraSteel 242 or A36, smooth wall carbon steel.
- ➔ **MANNING'S COEFFICIENT:** 0.012
- ➔ **STANDARD:** Wall Thickness .500". Lengths 8 to 10 Ft.
- ➔ **SPECIALS:** Wall Thickness up to 2.00".
- ➔ **INFRASTEEL LINER SIZE AND SHAPE:** Engineered to maximize area of flow based on field measurements.

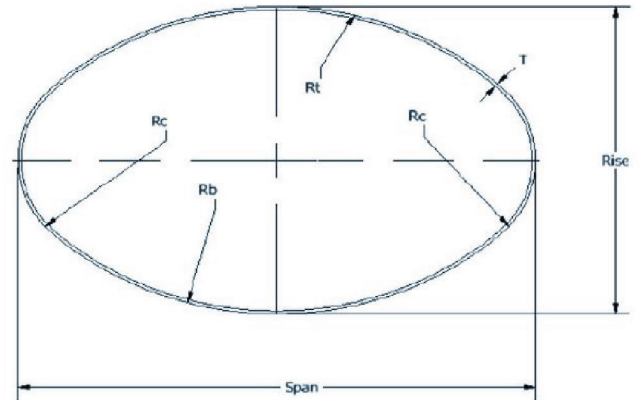


Specific rise and span dimensions are manufactured based on project requirements.

InfraSteel Elliptical Pipe Liner

Span 60" - 118"

Part #	Span (in)	Rise (in)	Flow Area (sq ft)	Wt/Ft (lbs)	Ft/Trk (ft)
E060041	60	41	41	275	160
E062042	62	42	42	283	160
E064043	64	43	43	291	150
E066045	66	45	45	299	150
E068046	68	46	46	310	150
E070048	70	48	48	320	140
E072049	72	49	49	329	140
E074050	74	50	50	337	130
E076052	76	52	52	347	130
E078053	78	53	53	355	106
E080054	80	54	54	363	106
E082056	82	56	56	374	96
E084057	84	57	57	382	96
E086058	86	58	58	390	96
E088060	88	60	60	401	96
E090061	90	61	61	409	86
E092062	92	62	62	417	86
E094064	94	64	64	427	86
E096065	96	65	65	436	86
E098067	98	67	67	446	76
E100068	100	68	68	454	76
E102069	102	69	69	462	76
E104071	104	71	71	473	48
E106072	106	72	72	481	48
E108073	108	73	73	489	48
E110075	110	75	75	500	48
E112076	112	76	76	508	48
E114077	114	77	77	516	48
E116079	116	79	79	526	48
E118080	118	80	80	535	48



- ➔ **MATERIAL TYPE:** InfraSteel 242 or A36, smooth wall carbon steel.
- ➔ **MANNING'S COEFFICIENT:** 0.012
- ➔ **STANDARD:** Wall Thickness .500". Lengths 8 to 10 Ft.
- ➔ **SPECIALS:** Wall Thickness up to 2.00".
- ➔ **INFRASTEEL LINER SIZE AND SHAPE:** Engineered to maximize area of flow based on field measurements.

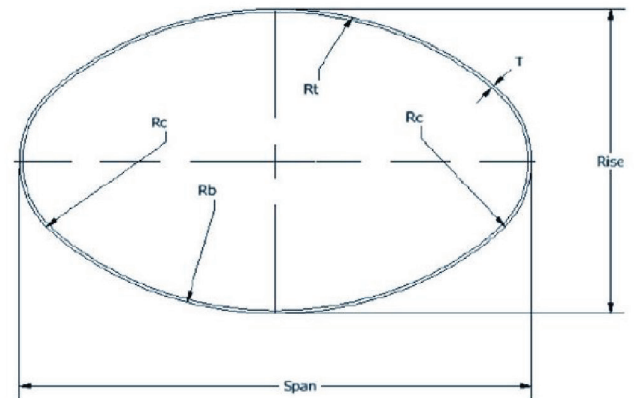


Specific rise and span dimensions are manufactured based on project requirements.

InfraSteel Elliptical Pipe Liner

Span 120" – 180"

Part #	Span (in)	Rise (in)	Flow Area (sq ft)	Wt/Ft (lbs)	Ft/Trk (ft)
E120081	120	81	52.05	543	48
E122083	122	83	54.23	553	38
E124084	124	84	55.79	561	38
E126086	126	86	58.04	572	38
E128087	128	87	59.66	580	38
E130088	130	88	61.30	588	38
E132090	132	90	63.66	599	38
E134091	134	91	65.36	607	38
E136092	136	92	67.07	615	38
E138094	138	94	69.54	626	38
E140095	140	95	71.31	634	38
E142096	142	96	73.11	642	38
E144098	144	98	75.68	652	38
E146099	146	99	77.53	661	38
E148100	148	100	79.40	669	38
E150102	150	102	82.08	679	38
E152103	152	103	84.00	688	28
E154105	154	105	86.76	698	28
E156106	156	106	88.74	706	28
E158107	158	107	90.74	715	28
E160109	160	109	93.61	725	28
E162110	162	110	95.66	733	28
E164111	164	111	97.74	741	28
E166113	166	113	100.71	752	28
E168114	168	114	102.85	760	28
E170115	170	115	105.00	768	28
E172117	172	117	108.08	779	28
E174118	174	118	110.29	787	28
E176120	176	120	113.44	798	28
E178121	178	121	115.71	806	28
E180122	180	122	118.00	814	28



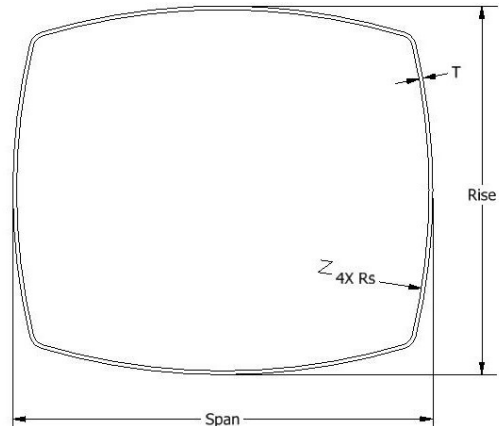
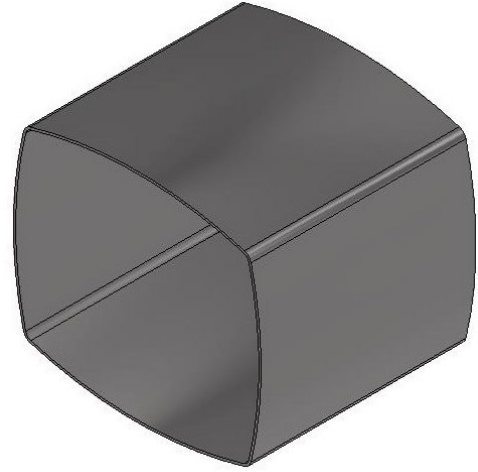
- ➔ **MATERIAL TYPE:** InfraSteel 242 or A36, smooth wall carbon steel.
- ➔ **MANNING'S COEFFICIENT:** 0.012
- ➔ **STANDARD:** Wall Thickness .500". Lengths 8 to 10 Ft.
- ➔ **SPECIALS:** Wall Thickness up to 2.00".
- ➔ **INFRASTEEL LINER SIZE AND SHAPE:** Engineered to maximize area of flow based on field measurements

i Specific rise and span dimensions are manufactured based on project requirements.

InfraSteel MAXBOX

Span 32" - 92"

Part #	Span (in)	Rise (in)	Flow Area (sq ft)	Wt/Ft (lbs)	Ft/Trk (ft)
F032020	32	20	3.7	153	270
F032032	32	32	6.19	192	210
F044020	44	20	4.91	187	210
F044032	44	32	8.51	228	180
F044044	44	44	11.93	266	150
F054043	54	43	14.28	263	140
F056032	56	32	10.64	293	150
F056044	56	44	15.17	263	150
F056056	56	56	19.52	340	120
F068032	68	32	12.59	296	140
F068044	68	44	18.22	337	120
F068056	68	56	23.68	376	90
F068068	68	68	28.96	414	70
F080044	80	44	21.1	372	100
F080056	80	56	27.67	412	96
F080068	80	68	34.06	450	78
F080080	80	80	40.27	488	66
F092044	92	44	23.8	406	100
F092056	92	56	31.47	446	90
F092068	92	68	38.97	486	78
F092080	92	80	46.29	524	66
F092092	92	92	53.43	562	58
F104056	104	56	35.09	481	72
F104068	104	68	43.7	521	64
F104080	104	80	52.13	560	56
F104092	104	92	60.38	598	48
F104104	104	104	68.45	636	48
F116056	116	56	38.54	515	40
F116068	116	68	48.25	556	40
F116080	116	80	57.79	595	40
F116092	116	92	67.15	634	40
F116104	116	104	76.33	672	32
F116116	116	116	85.32	710	32
F128044	128	44	30.83	505	80
F128068	128	68	52.62	590	50
F128092	128	92	73.74	670	50
F128116	128	116	94.14	746	40
F128128	128	128	104.06	784	40
F140044	140	44	32.82	538	40
F140068	140	68	56.81	624	40
F140092	140	92	80.14	705	40
F140116	140	116	102.76	782	32
F140140	140	140	124.65	858	32



- ➔ **MATERIAL TYPE:** InfraSteel 242 or A36, smooth wall carbon steel.
- ➔ **MANNING'S COEFFICIENT:** 0.012
- ➔ **STANDARD:** Wall Thickness .500". Lengths 8 to 10 Ft.
- ➔ **SPECIALS:** Wall Thickness up to 2.00".
- ➔ **INFRASTEEL LINER SIZE AND SHAPE:** Engineered to maximize area of flow based on field measurements

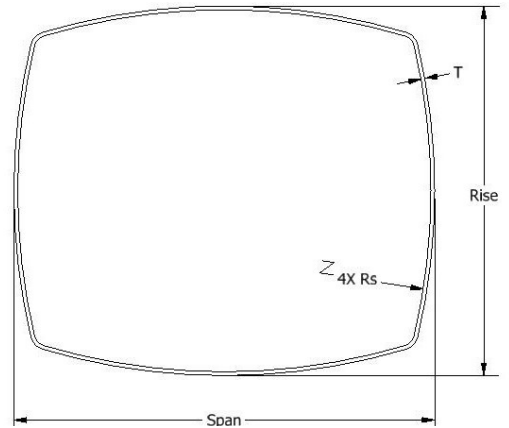
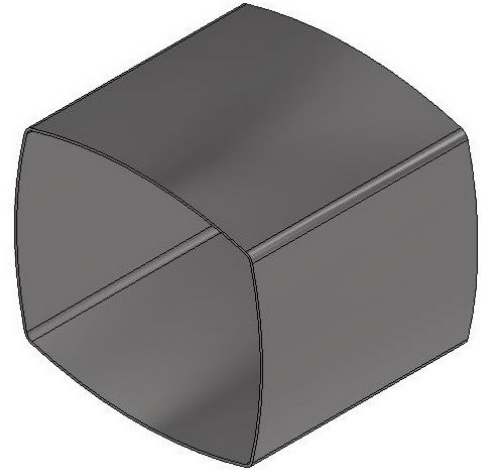


Specific rise and span dimensions are manufactured based on project requirements.

InfraSteel MAXBOX

Span 104" - 140"

Part #	Span (in)	Rise (in)	Flow Area (sq ft)	Wt/Ft (lbs)	Ft/Trk (ft)
BI04056	104	56	37.33	514	72
BI04068	104	68	45.92	555	64
BI04080	104	80	54.50	596	56
BI04092	104	92	63.08	637	48
BI04104	104	104	71.67	677	48
BI16056	116	56	41.42	552	40
BI16068	116	68	51.00	593	40
BI16080	116	80	60.59	633	40
BI16092	116	92	70.17	674	40
BI16104	116	104	79.75	715	32
BI16116	116	116	89.34	756	32
BI28044	128	44	34.87	549	80
BI28068	128	68	56.04	630	50
BI28092	128	92	77.20	712	50
BI28116	128	116	98.37	794	40
BI28128	128	128	108.95	835	40
BI40044	140	44	37.84	587	40
BI40068	140	68	61.01	668	40
BI40092	140	92	84.18	750	40
BI40116	140	116	107.34	832	32
BI40140	140	140	130.51	913	32



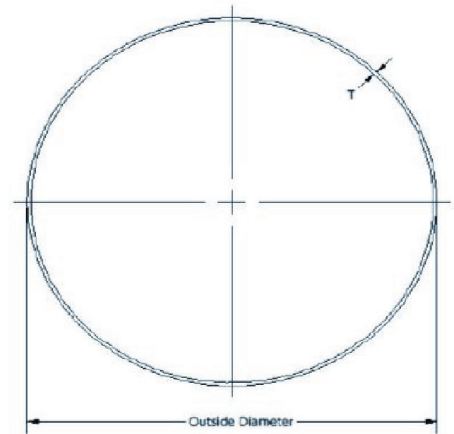
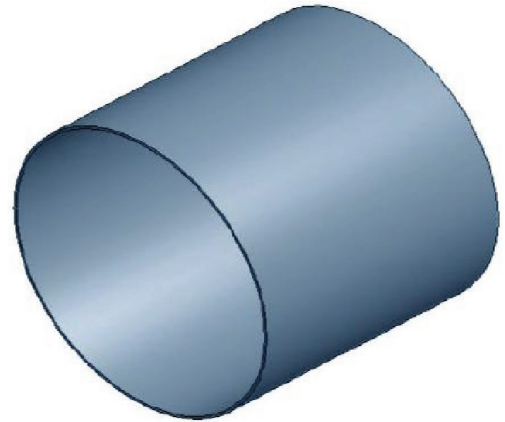
- ➔ **MATERIAL TYPE:** InfraSteel 242 or A36, smooth wall carbon steel.
- ➔ **MANNING'S COEFFICIENT:** 0.012
- ➔ **STANDARD:** Wall Thickness .500". Lengths 8 to 10 Ft.
- ➔ **SPECIALS:** Wall Thickness up to 2.00".
- ➔ **INFRASTEEL LINER SIZE AND SHAPE:** Engineered to maximize area of flow based on field measurements

i Specific rise and span dimensions are manufactured based on project requirements.

InfraSteel Round Pipe Liner

36" – 94" Diameter

Part #	Diam (in)	Flow Area (sq ft)	Wt/Ft (lbs)	Ft/Trk (ft)
R036	36	6.68	90	200
R038	38	7.47	200	160
R040	40	8.30	211	160
R042	42	9.17	222	160
R044	44	10.08	233	160
R046	46	11.04	243	160
R048	48	12.05	254	160
R050	50	13.10	265	120
R052	52	14.19	275	80
R054	54	15.32	286	80
R056	56	16.50	297	80
R058	58	17.72	307	80
R060	60	18.99	318	80
R062	62	20.29	329	80
R064	64	21.65	339	80
R066	66	23.04	350	80
R068	68	24.48	361	40
R070	70	25.97	372	40
R072	72	27.49	382	40
R074	74	29.07	393	40
R076	76	30.68	404	40
R078	78	32.34	414	40
R080	80	34.04	425	40
R082	82	35.78	436	40
R084	84	37.57	446	40
R086	86	39.41	457	40
R088	88	41.28	468	40
R090	90	43.20	478	40
R092	92	45.17	489	40
R094	94	47.17	500	40



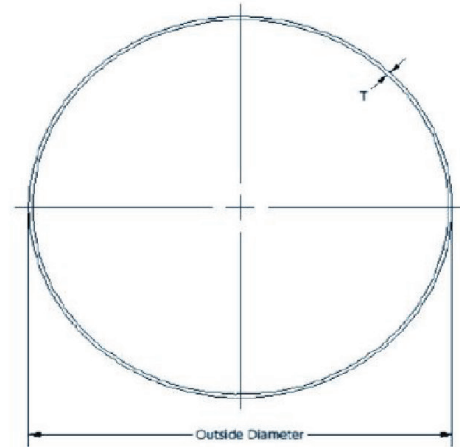
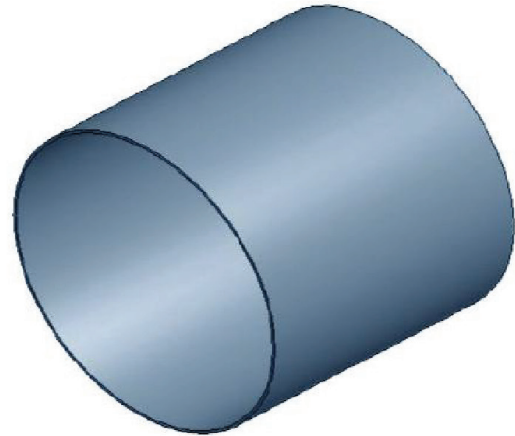
- ➔ **MATERIAL TYPE:** InfraSteel 242 or A36, smooth wall carbon steel.
- ➔ **MANNING'S COEFFICIENT:** 0.012
- ➔ **STANDARD:** Wall Thickness .500". Lengths 8 to 10 Ft.
- ➔ **SPECIALS:** Wall Thickness up to 2.00".
- ➔ **INFRASTEEL LINER SIZE AND SHAPE:** Engineered to maximize area of flow based on field measurements

i Specific rise and span dimensions are manufactured based on project requirements.

InfraSteel Round Pipe Liner

96" – 144" Diameter

Part #	Diam (in)	Flow Area (sq ft)	Wt/Ft (lbs)	Ft/Trk (ft)
R096	96	49.22	511	40
R098	98	51.32	521	40
R100	100	53.46	532	40
R102	102	55.64	543	40
R104	104	57.86	553	40
R106	106	60.13	564	40
R108	108	62.44	575	40
R110	110	64.80	585	40
R112	112	67.20	596	40
R114	114	69.64	607	40
R116	116	72.13	617	40
R118	118	74.66	628	40
R120	120	77.24	639	40
R122	122	79.85	650	40
R124	124	82.52	660	40
R126	126	85.22	671	40
R128	128	87.97	682	40
R130	130	90.76	692	40
R132	132	93.60	703	40
R134	134	96.48	714	40
R136	136	99.40	724	40
R138	138	102.37	735	40
R140	140	105.38	746	40
R142	142	108.43	756	40
R144	144	111.53	767	40

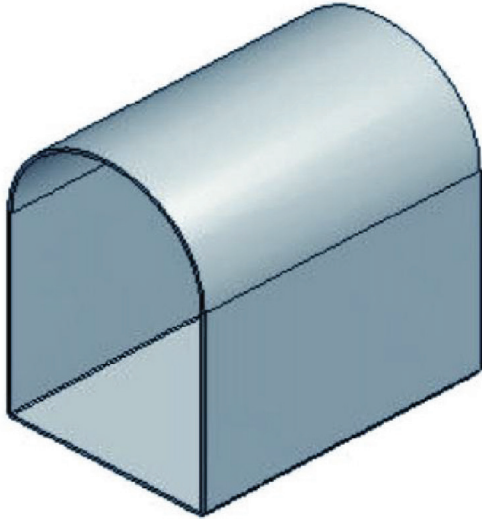


wall carbon steel.

- ➔ **MANNING'S COEFFICIENT:** 0.012
- ➔ **STANDARD:** Wall Thickness .500". Lengths 8 to 10 Ft.
- ➔ **SPECIALS:** Wall Thickness up to 2.00".
- ➔ **INFRASTEEL LINER SIZE AND SHAPE:** Engineered to maximize area of flow based on field measurements

i Specific rise and span dimensions are manufactured based on project requirements.

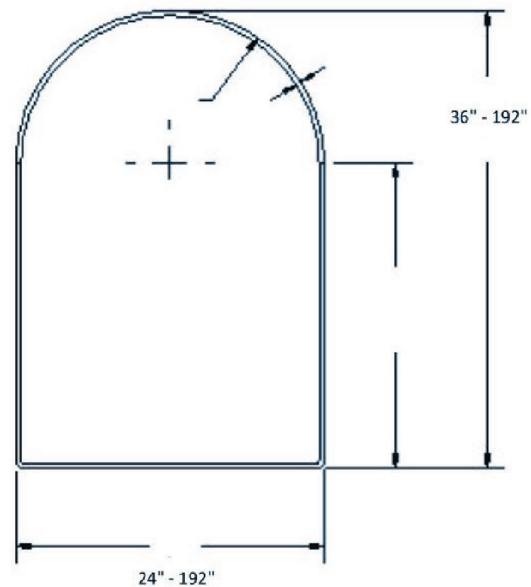
InfraSteel Liner for Top Arch Culvert



→ **MATERIAL TYPE:** InfraSteel 242 or A36, smooth wall carbon steel.

→ **MANNING'S COEFFICIENT:** 0.012

→ **INFRASTEEL LINER SIZE AND SHAPE:**
Engineered for load bearing requirements and to maximize area of flow based on field measurements



i Specific rise and span dimensions are manufactured based on project requirements.